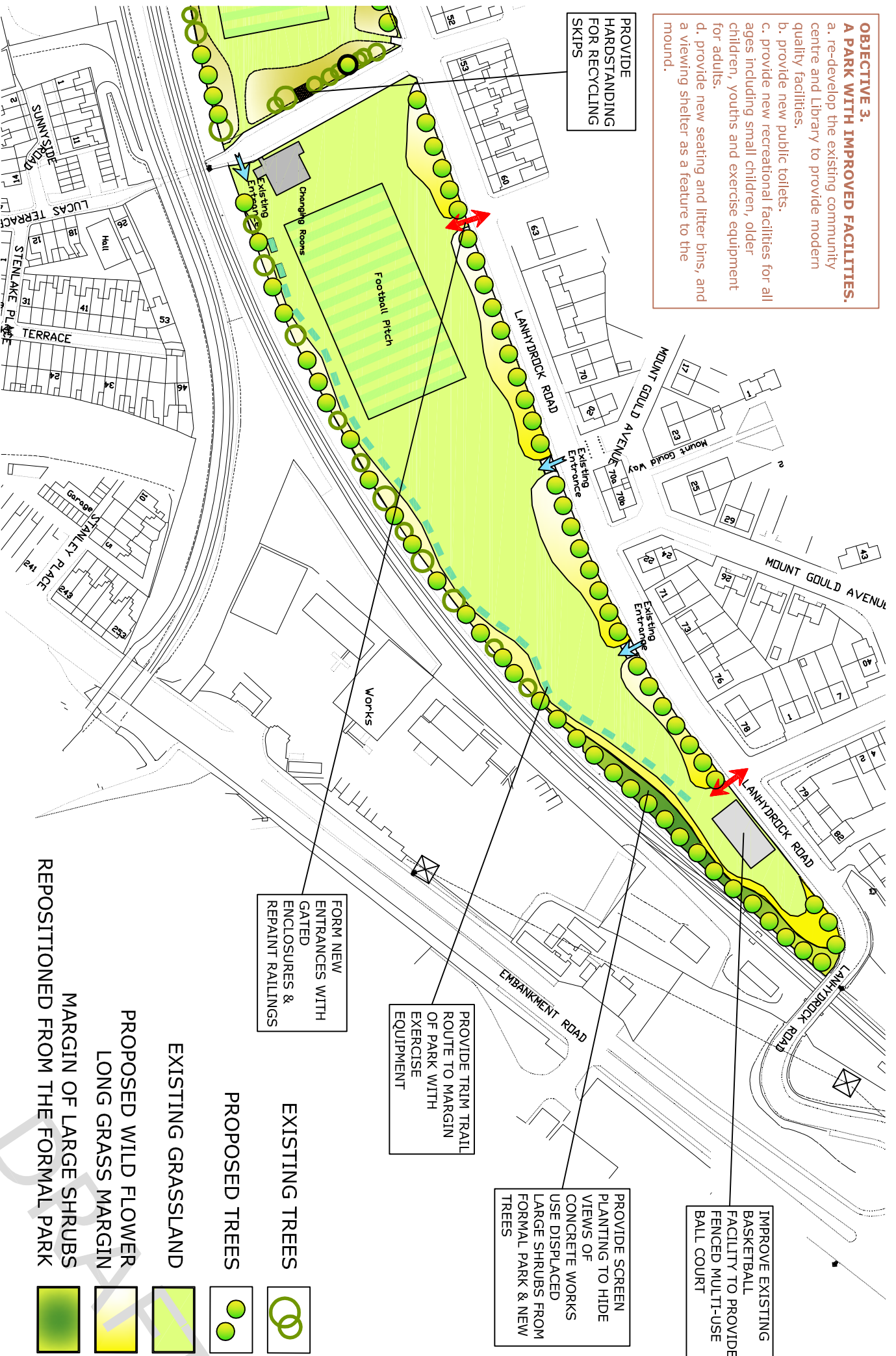


OBJECTIVE 3. A PARK WITH IMPROVED FACILITIES.

- a. re-develop the existing community centre and Library to provide modern quality facilities.
- b. provide new public toilets.
- c. provide new recreational facilities for all ages including small children, older children, youths and exercise equipment for adults.
- d. provide new seating and litter bins, and a viewing shelter as a feature to the mound.



PROVIDE HARDSTANDING FOR RECYCLING SKIPS

FORM NEW ENTRANCES WITH GATED ENCLOSURES & REPAIR RAILINGS

PROVIDE TRIM TRAIL ROUTE TO MARGIN OF PARK WITH EXERCISE EQUIPMENT

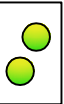
PROVIDE SCREEN PLANTING TO HIDE VIEWS OF CONCRETE WORKS USE DISPLACED LARGE SHRUBS FROM FORMAL PARK & NEW TREES

IMPROVE EXISTING BASKETBALL FACILITY TO PROVIDE FENCED MULTI-USE BALL COURT

EXISTING TREES



PROPOSED TREES



EXISTING GRASSLAND



PROPOSED WILD FLOWER LONG GRASS MARGIN



MARGIN OF LARGE SHRUBS REPOSITIONED FROM THE FORMAL PARK



- FRIENDS OF TOTBILL PARK IN CONJUNCTION WITH PLYMOUTH CITY COUNCIL -

TOTBILL PARK, ST JUDES PLYMOUTH - FEB 2007